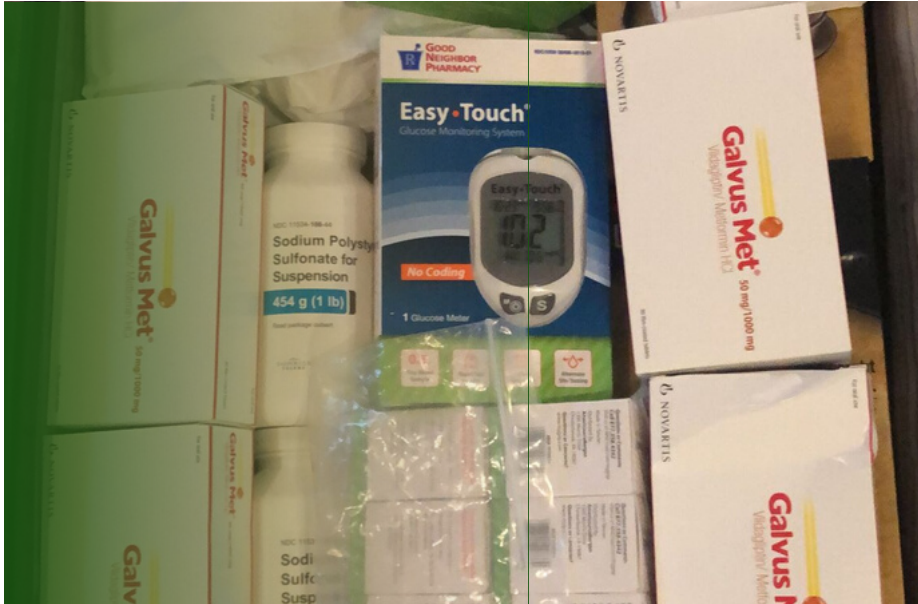


Newsletter

June Edition



According to a 2018 study published in the National Library of Medicine, diabetes mellitus is a chronic non-communicable disease characterized by hyperglycemia and is associated with chronic complications affecting the overall quality of life. As of 2017, **the prevalence of diabetes in Lebanon is estimated to be 14.6%, a statistic that has likely grown in the last few years.**

Egatha has made great strides to combat this specific disease because of its iron grip on lower-classed Lebanese citizens. With the ongoing drug shortage and financial crises, those living with diabetes cannot properly treat themselves, allowing their disease to become increasingly complex and difficult to manage. Egatha looks forward to developing its initiative of diabetes management, of course, with the help of our generous and loyal donors.

In the picture above is a box of diabetes-related medicine that was recently sent to Lebanon. To your right is **your donation in action**-- Egatha volunteers checking fasting blood sugar for diabetic patients in the old city of Tyre.



Highlights

Diabetes Control

- See what Egatha is doing to combat the uncontrolled diabetes epidemic in Lebanon.

Our Success Stories

- See who we have helped in the last month!





“

MY - 59 YEARS OLD

June 2022

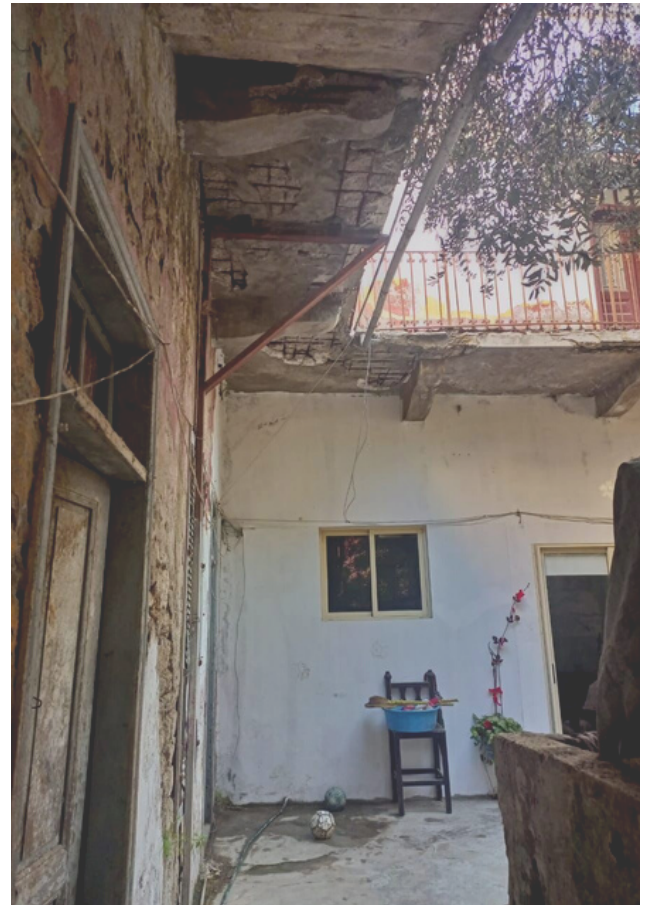
Egatha's Patient

This patient has breast cancer with bone metastasis. She was recently admitted to the hospital for severe bone pain. She is single, unemployed, and has 2 sick brothers who try to take care of her but are unable to keep up with medical bills. Egatha covered this woman's hospitalization fees-- she can focus on getting better rather than worrying over financials.

June 2022

Look into Lebanon

This is just a small window into the living conditions many are trying to survive under. People can barely sustain their basic needs, let alone medical bills and healthcare costs.



ONE ACT OF LOVE AT A TIME